



BLACKWELL ADVENTURE



Girlguiding UK
girls in the lead



2009 PRICES

CONDITIONS OF BOOKING

All bookings are confirmed in writing on receipt of a completed booking form and deposit. If the facility is unavailable on the dates you require alternative dates will be offered. Blackwell Adventure reserves the right to move a group to another part of the site should the need arise.

The normal arrival times for residential groups, including camping are:

weekends

from 5pm Friday, departing by 5pm Sunday

other times

from 2pm, departing by 12 noon.

If you require other arrival or departure times, please contact us.

Final numbers for activity days must be confirmed at least 28 days prior to arrival. Your invoice will be based on the original number confirmed, unless the final numbers are greater on the day. Individual activity session(s) will be charged for a minimum of eight people per session.

The following cancellation policy applies for all bookings. Please let us know if you think you may have to cancel, we may be able to offer help or advice that enables the visit to proceed.

CANCELLATIONS

Within 4 weeks of the event

full fee due

Within 4 - 8 weeks of the event

50% of total fee due

Within 8 - 12 weeks of the event

25% of total fee due

Over 12 weeks before the event

loss of deposit unless facilities can be re-booked

PAYMENTS

All outstanding payments should be made in full on the day of departure unless separate arrangements have been made.

If paying by cheque, it would be preferable to settle your account by group/ organisation cheque, as we can only accept personal cheques up to the value of the appropriate Bankers Card.

Cheques should be made payable to **Blackwell Adventure**.

Unfortunately we do not accept credit cards.

BLACKWELL ADVENTURE

Agmore Road Blackwell Bromsgrove B60 1PX

email info@blackwelladventure.co.uk

web www.blackwelladventure.co.uk

tel 0121 445 1285 fax 0121 445 5496



HOW TO MAKE YOUR BOOKING

Call us on 0121 445 1285 or e-mail info@blackwelladventure.co.uk to check availability of accommodation and activities and make your initial enquiry. We will need to know a contact name, address and the approximate numbers you will be bringing.

Once you have received your provisional booking information from us please return the form, duly signed, with the appropriate deposit.

Once the deposit is returned we will confirm all your details and forward the information pack and programme relevant to your party. Please see terms and conditions for more details on when the final payment will need to be received by us.

If you have any queries one of our customer service team will be more than happy to answer any questions you may have and give guidance and help with your booking.



BLACKWELL ADVENTURE

FACILITIES 2009

SCOUT, GUIDE & VOLUNTARY GROUPS BIRMINGHAM SCOUTS

CAMP FEES

Per person	£ 3.60	£ 3.20
------------	--------	--------

DAY VISITOR FEES

½ day or evening charged at 50%

Per person	£ 1.50	£ 1.30
------------	--------	--------

INDOOR ACCOMMODATION

per person

STABLE BLOCK

Minimum charge 16, maximum capacity 28

Per 24 hours	£ 8.20	£ 7.30
--------------	--------	--------

MANOR HOUSE

Minimum charge 20

Per 24 hours	No linen	£ 16.20	£ 14.30
Per 24 hours	Including bed linen	£ 20.20	£ 18.30

INDOOR FACILITIES

½ day or evening charged at 50%

GROUP ROOM

Maximum capacity 100

£ 65.00	£ 60.00
---------	---------

SPORTS HALL

Maximum capacity 150

£ 65.00	£ 60.00
---------	---------

when not being used for sport

BLACKWELL'S TENTED VILLAGE

BRAND NEW FOR 2009!

We now have a purpose built tented area; these tents are made with solid floors, traditional beds and will be available throughout the camping season. This will save you the time, effort and additional transport of bringing your own camping gear and the need to dry out wet canvas on you return home!

Per 24 hours, per person	£ 7.20	£ 6.40
--------------------------	--------	--------

OTHER EQUIPMENT SUCH AS PATROL TENTS AND MARQUEES ARE ALSO AVAILABLE. PLEASE CONTACT US FOR MORE DETAILS.

ALL PRICES FOR FACILITIES AND ACTIVITIES INCLUDE VAT.

MINIMUM 8 AND MAXIMUM 12 PARTICIPANTS PER ACTIVITY EXCEPT WHERE SPECIFIED.

ACTIVITIES 2009

ALL SCOUT, GUIDE & VOLUNTARY GROUPS

INSTRUCTOR LED ACTIVITIES

charged per session

HIGH ADVENTURE – 1½ HOUR SESSION

£ 60.00

Zip Wire **NEW 2009**

Crate Stack

3G Swing **NEW 2009**

Giants Ladder

Trapeze

High All Aboard

Multi Scramble

HIGH ADVENTURE – 1 HOUR SESSION

£ 40.00

Climbing - Indoor

Climbing - Outdoor

Abseiling

LOW CHALLENGE – 1 HOUR SESSION

£ 34.00

Archery

Orienteering

Team Challenge

Grass Sled

Pedal Karts

SWIMMING – 1 HOUR SESSION

£ 55.00

Max 30 participants

OFF SITE SESSION – ½ DAY AT PIKES POOL

Raft building

£ 95.00

Kayaking **NEW 2009**

£ 95.00

ACTIVITY BASE HIRE

charged per hour

HIGH POLES

3G SWING **NEW 2009**

ZIP WIRE **NEW 2009**

£ 40.00

INDOOR CLIMB

OUTDOOR TOWER

£ 35.00

ARCHERY

£ 30.00

SWIMMING

£ 34.00

SELF LED ACTIVITIES

PER HOUR

£ 25.00

Grass Sleds

Pedal Karts

Team Challenge

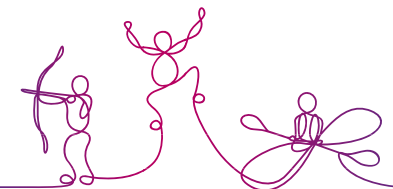
FREE OF CHARGE ACTIVITIES

Orienteering

Butterfly orienteering **NEW 2009**

Obstacle course

Use of pioneering equipment



BLACKWELL ADVENTURE